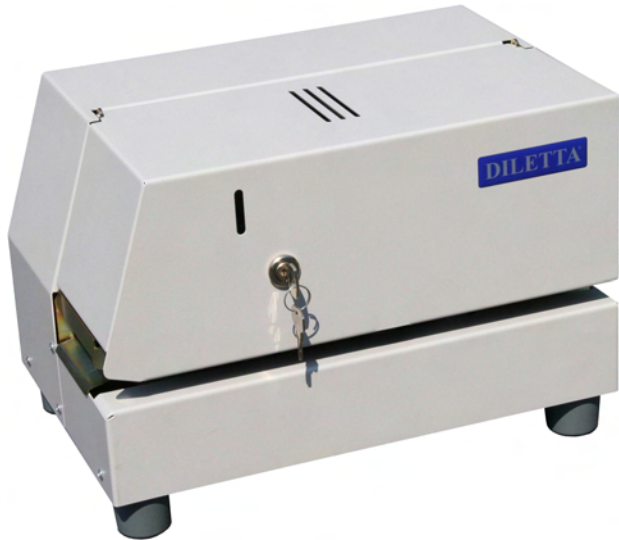
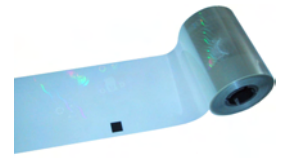


# DILETTA RL90

## Passport Laminating System for Ultra-Thin Security Foil on Supply Roll



### Security foil on supply roll

The laminate comes on a supply roll suitable for the DILETTA laminator. During the lamination, a 50 micron polyester film deposits a 6 to 8 micron tamper-evident coating on the passport page. The coating is available with different features with registered images and non-registered repeating images / features (wallpaper)

### The security foil features that are available are:

Hologram or Kinegram, wallpaper and registered; micro and nano printing; fine line printing, incl. guilloche or fine line background patterns; hidden imagery, viewable with laser pen; Scrambled Indicia; partial demetalized imagery; invisible UV inks; color shifting inks; OVD inks; water soluble inks; polarized color shifting inks; energy converting inks; Advantage color shifting orange to green or transparent.

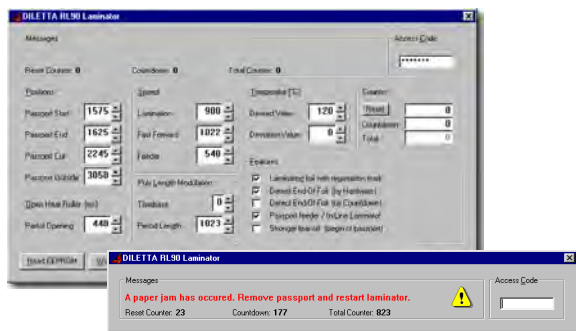


### Full control of all settings and status

The RL90 laminator comes with a software tool with three password protected operator levels for User, Supervisor and Administrator. In the user level the laminator displays all administrative information in order to advise the user in laminators use. The supervisor level allows to adjust the laminator to a specific foil. Temperature, laminating speed, positions and many further features can be set.

### Features

- Key locked cover for protection of foil against theft
- 16bit micro controller, 20 MHz
- Triple protection against overheating
- Quick release clamping system for laminate core and take-up-roll
- Serial interface for communication and configuration
- Automatic passport size adaption (length and height)
- Registered positioning of laminates
- Update of firmware via serial interface
- Laminating time < 20 seconds
- For automatic and manual operation
- End-Of-Foil detection
- Three internal counters
- Compact design
- PC-Software for individual settings and communication.



User interface for user or supervisor (password protected)

RL90 Specification	
Laminating Method	Heat Roll, micro processor controlled
Laminating Speed	< 20 sec. (machine readable passport)
Temperature Range	40 - 180 °C
Heat up time (130 °C)	Approx. 120 sec.
Temperature Control	16-Bit Micro Controller with 20 MHz
Media Handling	Passports up to 96 pages
Interface	RS-232-C (serial), USB-Adapter (optional)
Dimensions (WxDxH)	360 x 240 x 220 mm <sup>3</sup>
Weight	Approx. 16 kg
Power Source	100 - 240 V, 50 / 60Hz
Power Consumption	450 W
Power Heat Lamp	300 W
Operating Environment Temperature Range	5 - 55°C
Operating Environment Humidity	10 - 90 % RH

All Specifications subject to change without notice.  
All brand and product names are trademarks of their respective companies.

## DILETTA ID-Systems

Industriestrasse 25-27 • D-64569 Nauheim • Germany  
Phone: +49 / 6152 / 1804 - 0 • Telefax: +49 / 6152 / 1804 - 22  
E-Mail: info@diletta.com • Internet: www.diletta.com